

BAXI



Eco5 Compact +

SPARE PARTS CATALOGUE

- June 2018 -

HOW TO READ THE SPARE PARTS CATALOGUE

In the spare part catalogue, after the exploded diagrams, there are the components lists of the boilers; this is the meaning of the different columns:

Pos. Identification number of the component in the exploded diagram of the boiler.

Description Short description of the component.

Code BAXI S.p.A. code of the component.

Tab. XX XX is the exploded diagram number of the boiler taken into consideration.

From serial number Date (year and week) identifying the beginning of production of a component (taken from the serial number of the boiler).
e.g. 1205: year 2012 (1 identifies the decade 2010-2019; 2 identifies the year) – 5th week.
If the box is empty, the component is in use from the beginning of production of the boiler.

To serial number Date (year and week) identifying the end of production of a component (taken from the serial number of the boiler).
e.g. 1235: year 2012 (1 identifies the decade 2010-2019; 2 identifies the year) – 35th week.
If the box is empty, the component is still in use.

Interchangeable It identifies the interchangeability between the new component and the old one.
YES: components are interchangeable.
NO: components are not interchangeable.

TABELLA COLLEGAMENTO CODICE CALDAIA - ESPLOSO TABLEAU CONNECTION CODEX CHAUDIERE - VUE ECLATEE BOILERS CONNECTION BOARD - EXPLODED VIEW

BOILER CODE	BOILER DESCRIPTION	EXPLODED REF.
CODICE CALDAIA	DESCRIZIONE CALDAIA	RIF. ESPLOSO
CODIGO CALDERA	DESCRIPCION CALDERA	REF. EXPLOSIONADO
CODE CHAUDIÈRE	DESCRIPTION CHAUDIÈRE	RÉF. EXPLOSÉE
722529101/2	ECO5 COMPACT+ 1.24/120L	Tab 532
721746401/2	ECO5 COMPACT+ 1.24/80L	Tab 532
721746501/2	ECO5 COMPACT+ 24	Tab 531

Eco5 Compact +

02/08/2018

Pos	Code	Description code				To serial number	From serial number	Interchan geable:
			721746501/2 24	722529101/2 1.24/120L	721746401/2 1.24/80L			
2	5698660	LEFT PANEL ASSEMBLY ECO4 ATM.	•	•	•			
3	5698650	RIGHT PANEL ASSEMBLY ECO4 ATM.	•	•	•			
4	722393800	FRONTAL PANEL ECO5 COMPACT ATM	•	•	•			
5	5117460	TRAVERSE SIDES CONNECTION-ATM-	•	•	•			
21	5402050	WASHER-SEALING	•	•	•			
27	5698630	COMBUST. CHAMBER ASS. ECO4 ATM	•	•	•			
28	5213220	INSULATING PANEL	•	•	•			
29	5213280	INSULATING PANEL	•	•	•			
30	5213380	FRONTAL INSULATING PANEL	•	•	•			
31	615370	COMBUST.CHAMBER FRONTAL PANEL	•	•	•			
32	5677660	PRIMARY EXCHANGER WITH CLIPS	•	•	•			
33	710963000	OR 21,5X3 EP70 TFL	•	•	•			
34	5113650	PRIMARY EXCHANGER FIXING CLIP	•	•	•			
35	5693900	RECT.EXPANSION VESSEL 6I-CIMM-	•	•	•			
36	5698830	PIPE EXPANSION VESSEL	•	•	•			
41	5663710	BURNER ASSEMBLY (13 ELEM.)	•	•	•			
43	5698690	GAS RAMP 13HOLES/INJECT. d1,18	•	•	•			
44	5680020	TRANSFORMATION KIT G31	•	•	•			
45	5407940	GASKET-BURNER MANIFOLD	•	•	•			
46	5657180	ADAPTOR-MANIFOLD	•	•	•			
59	721426600	IGNITION CABLE	•	•	•			
61	5407830	INSULATION BOOT - ELECTRODE	•	•	•			
63	8422570	ELECTRODE - IGNITION	•	•	•			
70	5698720	PIPE PUMP/EXCHANGER ATM BITRON	•	•	•			
72	722185500	PUMP UMP 15-60 6M WITH CABLE	•	•	•	1824		
72	770477600	PUMP UPM3S 15-60 L4 SSI	•	•	•		1825	YES
73	7219215	AIR VENT PUMP WI.	•	•	•			
73	710493600	AIR VENT PUMP GR.	•	•	•			
76	5686660	DHW PLATE EXCHANGER 10 PLATES			•			
77	5404520	DHW PLATE EXCHANGER GASKET			•			
80	711033700	COMBI HYDROBLOCK RETURN BIT. ECO			•			
81	710048100	DHW CARTRIDGE			•			
90	710046600	FILLING TAP ASSY	•	•	•	1639		
90	766947000	FILLING TAP ASSY	•	•	•	1824	1640	YES
90	768777500	FILLING TAP ASSY	•	•	•		1825	YES
91	710045500	DISCHARGE TAP CONNECTION	•	•	•			
92	710071200	SAFETY VALVE 3 bar NOVASFER	•	•	•			
98	710046300	BY-PASS CONNECTION ASSY	•	•	•			
102	711033600	COMBI HYDROBLOCK DELIVERY BIT. EC			•			
113	710048300	BY-PASS CARTRIDGE	•	•	•			
114	710046400	O-RING d.15,54X2,62	•	•	•			
120	721403800	3WV CARTRIDGE			•			

Eco5 Compact +

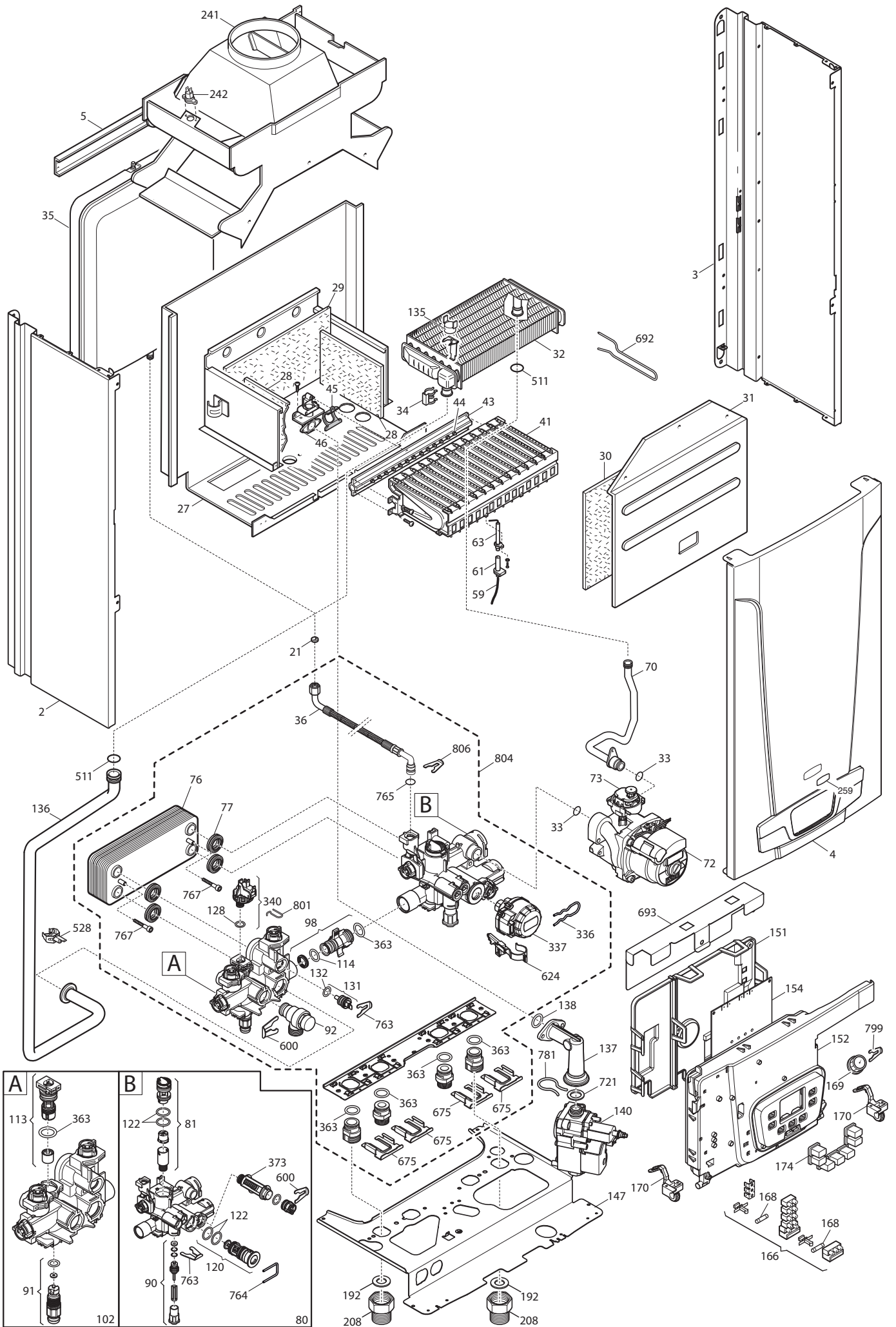
02/08/2018

Pos	Code	Description code				To serial number	From serial number	Interchan geable:
			721746501/2 24	722529101/2 1.24/120L	721746401/2 1.24/80L			
122	710047800	O-RING d.23,47X2,62			•			
128	710048800	O-RING d.8,9X1,9	•	•	•			
131	721309400	NTC SENSOR NICKEL			•			
132	710049100	O-RING d.11,91X2,62 OR115			•			
135	9951610	LIMIT THERMOSTAT 105°C	•	•	•			
136	5698740	PIPE EXCH./H.INLET ECO4 ATM	•	•	•			
137	721345600	GAS VALVE CONNECTING ELEMENT	•	•	•			
138	5402010	O RING 22.22x2.62	•	•	•			
140	710660400	GAS VALVE VK4105M	•	•	•			
147	711457300	CONNECTION TRAVERSE	•	•	•			
151	710654600	BOX COVER	•	•	•			
152	711454800	CONTROL PANEL	•	•	•			
154	721824700	PCB HON. ECO5/MAIN5	•	•	•	1620		
154	766077600	PCB HON. ECO5/MAIN5	•	•	•	1638	1621	YES
154	766487600	PCB ECO5/MAIN5	•	•	•		1639	YES
166	5688430	TERM.BOARD/DOUBLE FUSE HOLDER	•	•	•			
168	9950580	FUSE	•	•	•			
169	710673600	MANOMETER D.28	•	•	•			
170	711457500	CONTROL PANEL SUPPORT	•	•	•			
174	710830500	KEYBOARD MAIN5/ECO5	•	•	•			
192	5404650	SEALING WASHER G 3/4	•	•	•			
208	710635700	CONNECTING ELEMENT M/F G3/4	•	•	•			
241	5668420	CONVEYOR ASSEMBLY	•	•	•			
242	616160	FLUE SAFETY THERMOSTAT 70ø	•	•	•			
259	710419300	BRAND BAXI	•	•	•			
336	710047400	CLIP - 3WV MOTOR HEAD			•			
337	710047300	3WV MOTOR HEAD			•			
340	721384000	ON/OFF CH PRESSURE SWITCH	•	•	•			
363	710045300	O-RING d.17,96X2,62	•	•	•			
373	710047100	CH FILTER	•	•	•			
511	711230600	OR 17,13X2,62 EP70 TFL	•	•	•			
528	710702400	NTC SENSOR D18	•	•	•			
600	710045400	CLIP FLAT d.18	•	•	•			
624	710976600	HALL SENSOR ASSY			•			
675	710046100	CLIP BRASS ADAPTOR	•	•	•			
692	5114360	PRIMARY EXCHANGER CLIPS	•	•	•			
693	710783700	PRINTED CNTR. PANEL PROTECTION	•	•	•			
721	710660300	OR d.19,3X3,6 HNBR	•	•	•			
763	710046700	CLIP FLAT d.12	•	•	•			
764	710047500	CLIP U d.3			•			
765	710045700	O-RING d.9,19 X 2,62	•	•	•			
767	710046900	PTP EXCH FIXING SCREW			•			
781	710539600	CLIP GAS PIPE	•	•	•			

Eco5 Compact +

02/08/2018

Pos	Code	Description code	721746501/2 24	722529101/2 1.24/120L	721746401/2 1.24/80L	To serial number	From serial number	Interchan geable:
799	710654100	SPRING FIXING D.9	•	•	•			
801	710048700	CLIP CH PRESSURE SWITCH	•	•	•			
804	5698760	HYDRAULIC GROUP COMBI BITRON			•			
804	5699200	HYDRAULIC GROUP ONLY HEATING	•	•				
806	5117880	CLIP d.10 BITRON	•	•	•			
999	8414620	POWER CABLE	•	•	•			
999	8419040	CABLE - EARTH	•	•	•			
999	710501600	CABLE DHW SENSOR			•			
999	710794400	LOW POWER CABLE 7P ECO5			•			
999	710794500	3 WAY VALVE CABLE ECO5			•			
999	711285800	LOW POWER CABLE 7P ECO5 MONO	•	•				
999	711285900	3 WAY VALVE CABLE ECO5 MONO	•	•				
999	721426400	LOW VOLTAGE WIRING 12P	•	•	•			
999	721426500	GAS VALVE WIRING ECO5 ATM	•	•	•			
999	721748100	HIGH VOLTAGE WIRING ATM WI.	•	•	•			
999	721904100	HIGH VOLTAGE WIRING ATM GR.	•	•	•			



BAXI

BAXI S.p.A.
Via Trozzetti, 20
36061 BASSANO DEL GRAPPA (VI)
ITALY
Tel. +390424517111
Telefax +390424517379
E-mail. service@baxi.it