

BAXI



FOURTECH

SPARE PARTS CATALOGUE

- January 2015 -

HOW TO READ THE SPARE PARTS CATALOGUE

In the spare part catalogue, after the exploded diagrams, there are the components lists of the boilers; this is the meaning of the different columns:

Pos. Identification number of the component in the exploded diagram of the boiler.

Description Short description of the component.

Code BAXI S.p.A. code of the component.

Tab. XX XX is the exploded diagram number of the boiler taken into consideration.

Until 31st December 2011

From serial number Date (year and week) identifying the beginning of production of a component (taken from the serial number of the boiler).
e.g. B005: year 2000 (B identifies the decade 2000-2009; 0 identifies the year) – 5th week.
If the box is empty, the component is in use from the beginning of production of the boiler.

To serial number Date (year and week) identifying the end of production of a component (taken from the serial number of the boiler).
e.g. B012: year 2000 (B identifies the decade 2000-2009; 0 identifies the year) – 12th week.
If the box is empty, the component is still in use.

Interchangeable It identifies the interchangeability between the new component and the old one.
YES: components are interchangeable.
NO: components are not interchangeable.

From 1st January 2012

From serial number Date (year and week) identifying the beginning of production of a component (taken from the serial number of the boiler).
e.g. 1201: year 2012 (1 identifies the decade 2010-2019; 2 identifies the year) – 01th week.
If the box is empty, the component is in use from the beginning of production of the boiler.

To serial number Date (year and week) identifying the end of production of a component (taken from the serial number of the boiler).
e.g. 1225: year 2012 (1 identifies the decade 2010-2019; 2 identifies the year) – 25th week.
If the box is empty, the component is still in use.

Interchangeable It identifies the interchangeability between the new component and the old one.
YES: components are interchangeable.
NO: components are not interchangeable.

TABELLA COLLEGAMENTO CODICE CALDAIA - ESPLOSO TABLEAU CONNECTION CODEX CHAUDIERE - VUE ECLATEE BOILERS CONNECTION BOARD - EXPLODED VIEW

| BOILER CODE | BOILER DESCRIPTION | EXPLODED REF. |
|----------------|------------------------|-------------------|
| CODICE CALDAIA | DESCRIZIONE CALDAIA | RIF. ESPLOSO |
| CODIGO CALDERA | DESCRIPCION CALDERA | REF. EXPLOSIONADO |
| CODE CHAUDIÈRE | DESCRIPTION CHAUDIÈRE | RÉF. EXPLOSÉE |
| CSB461143680 | FOURTECH 1.14 -BAXI- | Tab 375 |
| CSB465143680 | FOURTECH 1.14 F -BAXI- | Tab 376 |
| CSB461243680 | FOURTECH 1.24 -BAXI- | Tab 375 |
| CSB465243680 | FOURTECH 1.24 F -BAXI- | Tab 376 |
| CSB462243680/1 | FOURTECH 24 -BAXI- | Tab 366 |
| CSB466243680/1 | FOURTECH 24 F -BAXI- | Tab 365 |

FOURTECH

| Pos | Code | Description code | CSB461143680 1.14 | CSB461243680 1.24 | CSB46243680/1 24 | CSB465143680 1.14 F | CSB465243680 1.24 F | CSB466243680/1 24 F | To serial number | From serial number | Intercha ngeable: |
|-----|-----------|------------------------------------|----------------------|----------------------|---------------------|------------------------|------------------------|------------------------|------------------------|--------------------------|----------------------|
| 2 | 5698660 | LEFT PANEL ASSEMBLY ECO4 ATM. | • | • | • | | | | | | |
| 2 | 5698680 | LEFT PANEL ASSEMBLY ECO4 FF | | | | • | • | • | | | |
| 3 | 5698650 | RIGHT PANEL ASSEMBLY ECO4 ATM. | • | • | • | | | | | | |
| 3 | 5698670 | RIGHT PANEL ASSEMBLY ECO4 FF | | | | • | • | • | | | |
| 4 | 628820 | FRONTAL PANEL ASS. ECO4 ATM | • | • | • | • | • | • | | | |
| 5 | 5117420 | TRAVERSE SIDES CONNECTION FF | | | | • | • | • | | | |
| 5 | 5117460 | TRAVERSE SIDES CONNECTION-ATM- | • | • | • | | | | | | |
| 8 | 5408080 | PRESSURE SWITCH PIPE L=270 | | | | • | • | • | | | |
| 9 | 5117740 | FLUE REDUCTION d.78mm | | | | • | • | • | | | |
| 12 | 5108690 | PLATE BLANKING | | | | • | • | • | | | |
| 13 | 5407400 | SUCTION CAP GASKET | | | | • | • | • | | | |
| 17 | 5214290 | BEND FLUE EMISSIONS ECO4 | | | | • | • | • | | | |
| 18 | 5409580 | PRESSURE SENSING VENTURI 80E | | | | • | | | | | |
| 18 | 5413850 | PRESS.SENS.VENTURI SINGLE TAP | | | | | • | • | | | |
| 21 | 5402050 | WASHER-SEALING | • | • | • | • | • | • | | | |
| 22 | 5678500 | FAN 31W | | | | • | | | | | |
| 22 | 5682150 | FAN | | | | | • | • | | | |
| 23 | 628610 | PRESS.SWITCH ASS. 0,68mbar HONEYW. | | | | | • | • | | C121 | YES |
| 23 | 628770 | FLUE PRESS.SWITCH 70-60Pa HUBA | | | | | • | • | C120 | | |
| 23 | 628800 | FLUE PRESS.SWITCH 50-39Pa HUBA | | | | • | | | 1312 | | |
| 23 | 5663820 | PRESSURE SWITCH 80 ASS. IND. | | | | | • | • | C120 | | |
| 23 | 710789900 | PRESSURE SWITCH ASSEMBLY HUBA | | | | | • | • | 1448 | C121 | YES |
| 23 | 711277100 | FLUE PRESS. SWITCH 50-39Pa HUBA | | | | • | | | | 1313 | YES |
| 23 | 721890300 | FLUE PRESS.SWITCH 70-60Pa HUBA | | | | | • | • | | 1449 | YES |
| 24 | 5407930 | PIPE - VALVE COMPENSATION | | | | • | • | • | B923 | | |
| 24 | 5414320 | PIPE-VALVE COMPENS.4,5x8 L=170 | | | | • | • | • | | B924 | YES |
| 25 | 5113800 | CONVEYOR ASSEMBLY | | | | • | • | • | | | |
| 27 | 5698630 | COMBUST. CHAMBER ASS. ECO4 ATM | | • | • | | | | | | |
| 27 | 5698640 | COMBUST. CHAMBER ASS. ECO4 FF | | | | • | • | • | | | |
| 27 | 5699130 | COMB.CHAMBER ASS.ECO4 ATM 14KW | • | | | | | | | | |
| 28 | 5213210 | INSULATING PANEL | | | | • | • | • | | | |
| 28 | 5213220 | INSULATING PANEL | • | • | • | | | | | | |
| 29 | 5213280 | INSULATING PANEL | • | • | • | • | • | • | | B506 | YES |
| 30 | 5213370 | INSULATING PANEL | | | | • | • | • | | | |
| 30 | 5213380 | FRONTAL INSULATING PANEL | • | • | • | | | | | | |
| 31 | 612970 | COMB. CHAMBER FRONTAL PANEL | | | | • | • | • | | | |
| 31 | 615370 | COMBUST.CHAMBER FRONTAL PANEL | • | • | • | | | | | | |
| 32 | 5677660 | PRIMARY EXCHANGER WITH CLIPS | • | • | • | • | • | • | | | |
| 33 | 5403130 | O-RING 22 x 3 | • | • | • | • | • | • | 1311 | | |
| 33 | 710963000 | OR 21,5X3 EP70 TFL | • | • | • | • | • | • | | 1312 | YES |
| 34 | 5113650 | PRIMARY EXCHANGER FIXING CLIP | • | • | • | • | • | • | | | |
| 35 | 5693900 | RECT.EXPANSION VESSEL 6I-CIMM- | • | • | • | | | | | | |

FOURTECH

| Pos | Code | Description code | CSB462343680/1 | | | | | | To serial number | From serial number | Interchangeable: |
|-----|-----------|-----------------------------------|----------------|------|----|--------|--------|------|------------------|--------------------|------------------|
| | | | 1.14 | 1.24 | 24 | 1.14 F | 1.24 F | 24 F | | | |
| 35 | 5695230 | CIRC.EXPANS.VESSEL 6I ZILMET | | | | | | | | | |
| 36 | 5698830 | PIPE EXPANSION VESSEL | • | • | • | • | • | • | | | |
| 37 | 5663830 | SEALED CHAMBER FRONT PANEL | | | | • | • | • | | | |
| 38 | 5401610 | VIEWING WINDOW GASKET | | | | • | • | • | | | |
| 39 | 5203930 | VIEWING WINDOW | | | | • | • | • | | | |
| 40 | 5103360 | SURROUND - VIEWING WINDOW | | | | • | • | • | | | |
| 41 | 5663710 | BURNER ASSEMBLY (13 ELEM.) | | • | • | | • | • | | | |
| 41 | 5665980 | BURNER ASSEMBLY PERFORMA 12e | • | | | • | | | | | |
| 43 | 5665960 | GAS RAMP 10 HOLES d.1,18 | • | | | • | | | | | |
| 43 | 5698690 | GAS RAMP 13HOLES/INJECT. d1,18 | | • | • | | | | | | |
| 43 | 5698700 | GAS RAMP 13HOLES/INJECT. d1,28 | | | | | • | • | | | |
| 44 | 5666400 | NATURAL GAS INJECTORS KIT | | | | • | • | • | | | |
| 44 | 5669460 | NATURAL GAS INJECTORS KIT | • | • | • | | | | | | |
| 44 | 5680020 | TRANSFORMATION KIT G31 | • | • | • | • | • | • | | | |
| 45 | 5407940 | GASKET-BURNER MANIFOLD | • | • | • | • | • | • | | | |
| 46 | 5657180 | ADAPTOR-MANIFOLD | • | • | • | • | • | • | | | |
| 47 | 5407810 | GASKET-MANIFOLD ADAPTOR | | | | • | • | • | | | |
| 49 | 5409520 | HOSE ADAPTER CAP | | | | • | • | • | | | |
| 59 | 8612400 | IGNITION CABLE L=250 ECO4 | • | • | • | • | • | • | C023 | | |
| 59 | 710430800 | IGNITION CABLE L=250 RESIST. | • | • | • | • | • | • | | C024 | |
| 61 | 5407830 | INSULATION BOOT - ELECTRODE | • | • | • | • | • | • | | | |
| 62 | 5409570 | SEALED CHAMBER HOSE ADAPTER | | | | • | • | • | | | |
| 63 | 8422570 | ELECTRODE - IGNITION | • | • | • | • | • | • | | | |
| 70 | 5698720 | PIPE PUMP/EXCHANGER ATM BITRON | • | • | • | | | | | | |
| 70 | 5698730 | PIPE PUMP/EXCHANGER FF BITRON | | | | • | • | • | | | |
| 72 | 5698260 | PUMP ONE SPEED 5meters WILO | • | • | • | • | • | • | | | |
| 73 | 710139500 | AUTOMATIC AIR VENT | • | • | • | • | • | • | | | |
| 75 | 5404670 | GROMMET - PIPE ASSEMBLY | | | | • | • | • | | | |
| 76 | 5686660 | DHW PLATE EXCHANGER 10 PLATES | | | • | | | • | | | |
| 77 | 5404520 | DHW PLATE EXCHANGER GASKET | | | • | | | • | | | |
| 80 | 711033700 | COMBI HYDROBLOCK RETURN BIT. ECO | | | • | | | • | | | |
| 81 | 710048100 | DHW CARTRIDGE | | | • | | | • | | | |
| 90 | 710046600 | FILLING TAP ASSY | • | • | • | • | • | • | | | |
| 91 | 710045500 | DISCHARGE TAP CONNECTION | • | • | • | • | • | • | | | |
| 92 | 710071200 | SAFETY VALVE 3 bar NOVASFER | • | • | • | • | • | • | | | |
| 98 | 710046300 | BY-PASS CONNECTION ASSY | • | • | • | • | • | • | | | |
| 102 | 711033600 | COMBI HYDROBLOCK DELIVERY BIT. EC | | | • | | | • | | | |
| 113 | 710048300 | BY-PASS CARTRIDGE | • | • | • | • | • | • | | | |
| 114 | 710046400 | O-RING d.15,54X2,62 | • | • | • | • | • | • | | | |
| 120 | 710144100 | 3WV CARTRIDGE | | | • | | | • | 1448 | | |
| 120 | 721403800 | 3WV CARTRIDGE | | | • | | | • | | 1449 | YES |
| 122 | 710047800 | O-RING d.23,47X2,62 | | | • | | | • | | | |
| 128 | 710048800 | O-RING d.8,9X1,9 | • | • | • | • | • | • | | | |
| 131 | 710056200 | NTC SENSOR HONEYWELL | | | • | | | • | 1422 | | |

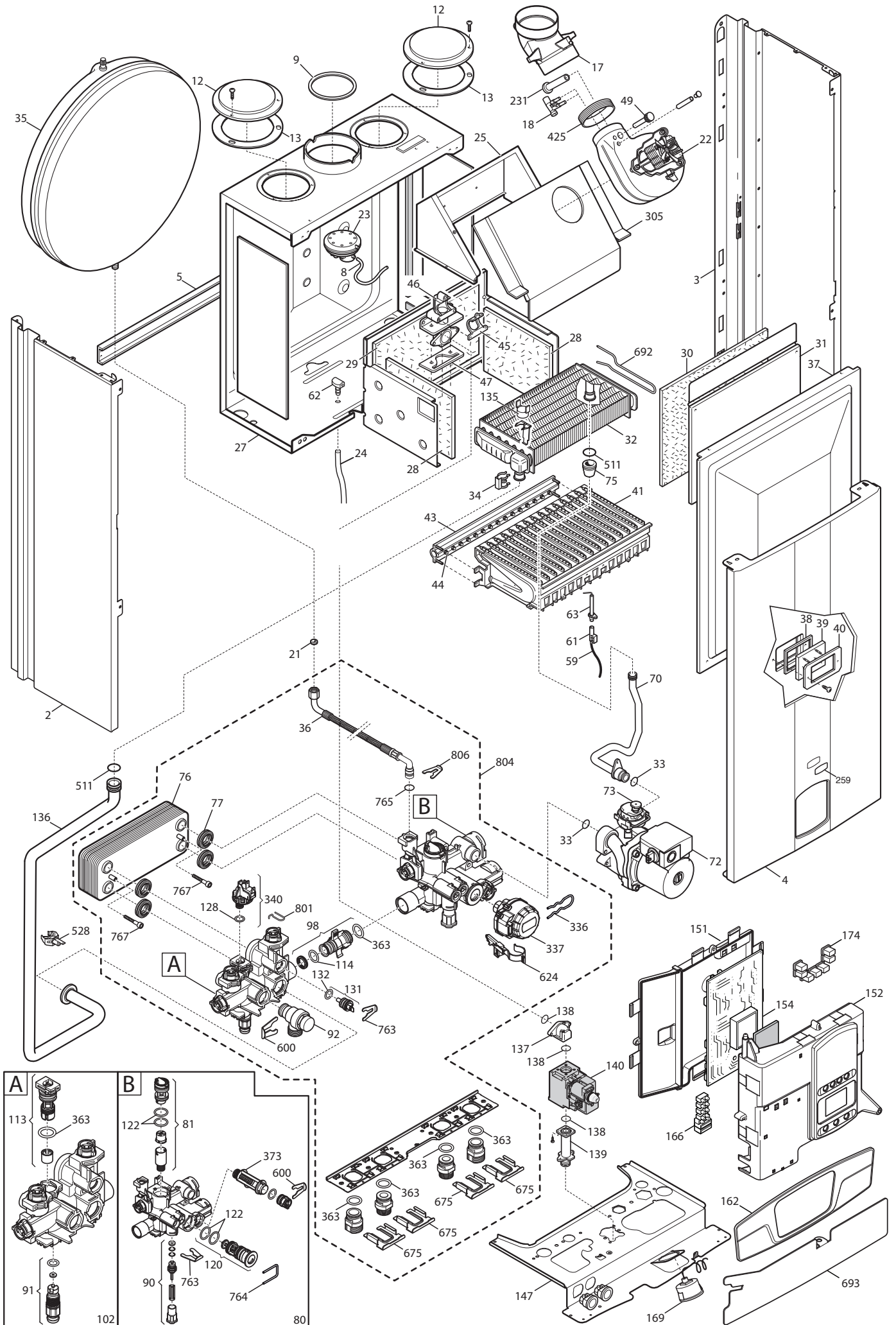
FOURTECH

| Pos | Code | Description code | CSB461143680 1.14 | CSB461243680 1.24 | CSB46243680/1 24 | CSB465143680 1.14 F | CSB465243680 1.24 F | CSB466243680/1 24 F | To serial number | From serial number | Intercha ngeable: |
|-----|-----------|--------------------------------|----------------------|----------------------|---------------------|------------------------|------------------------|------------------------|------------------------|--------------------------|----------------------|
| 131 | 721309400 | NTC SENSOR NICKEL | | | • | | | • | | 1423 | YES |
| 132 | 710049100 | O-RING d.11,91X2,62 OR115 | | | • | | | • | | | |
| 135 | 9951610 | LIMIT THERMOSTAT 105°C | • | • | • | • | • | • | | | |
| 136 | 5698740 | PIPE EXCH./H.INLET ECO4 ATM | • | • | • | | | | | | |
| 136 | 5698750 | PIPE EXCHANGER/H.INLET ECO4 FF | | | | • | • | • | | | |
| 137 | 5214270 | GAS V. ELBOW OUTLET OPEN FLUE | • | • | • | | | | | | |
| 137 | 5214280 | GAS VALVE ELBOW OUTLET FF | | | | • | • | • | | | |
| 138 | 5402010 | O RING 22.22x2.62 | • | • | • | • | • | • | | | |
| 139 | 5206620 | CONNECTOR-GAS VALVE INLET | • | • | • | • | • | • | | | |
| 140 | 5653610 | GAS VALVE - SIGMA 845048 | • | • | • | • | • | • | | | |
| 140 | 5665220 | GAS VALVE HON. | • | • | • | • | • | • | | | |
| 147 | 5698770 | CONNECTION TRAVERSE ECO4 | • | • | • | • | • | • | | | |
| 151 | 631660 | CONTROL PANEL ECO4 | • | • | • | • | • | • | | 1224 | |
| 151 | 5413650 | CONTROL PANEL COVER ECO4 | • | • | • | • | • | • | 1223 | | |
| 152 | 5698880 | CONTROL PANEL ECO4 BAXI | • | • | • | • | • | • | | | |
| 154 | 5702450 | PCB GROUP BERT&PART HDIMS 02 | • | • | • | • | • | • | | | |
| 154 | 710825300 | PCB SM11469 | • | • | • | • | • | • | | | |
| 162 | 5698910 | PANEL PLATE ECO4 BAXI | • | • | • | • | • | • | | | |
| 166 | 5688430 | TERM.BOARD/DOUBLE FUSE HOLDER | • | • | • | • | • | • | | | |
| 169 | 8922460 | MANOMETER d.40 XGR. BITRON | • | • | • | • | • | • | | | |
| 174 | 5414010 | KEYBOARD ECO4 BAXI | • | • | • | • | • | • | | | |
| 231 | 5409480 | FLUE INTAKE | | | | • | • | • | | | |
| 241 | 5668420 | CONVEYOR ASSEMBLY | | • | • | | | | | | |
| 241 | 5678060 | FLUE CHAMBER ASSEMBLY 14KW | • | | | | | | | | |
| 242 | 606930 | FLUE SAFETY THERMOSTAT 60C | • | | | | | | | | |
| 242 | 616160 | FLUE SAFETY THERMOSTAT 70ø | | • | • | | | | | | |
| 259 | 5681120 | BRAND BAXI LUNA3 | • | • | • | • | • | • | | | |
| 305 | 5113810 | EVACUATION SMOKE CHIMNEY | | | | • | • | • | | | |
| 336 | 710047400 | CLIP - 3WV MOTOR HEAD | | | • | | | • | | | |
| 337 | 710047300 | 3WV MOTOR HEAD | | | • | | | • | | | |
| 340 | 710048500 | ON/OFF CH PRESSURE SWITCH | • | • | • | • | • | • | 1448 | | |
| 340 | 721384000 | ON/OFF CH PRESSURE SWITCH | • | • | • | • | • | • | | 1449 | YES |
| 363 | 710045300 | O-RING d.17,96X2,62 | • | • | • | • | • | • | | | |
| 373 | 710047100 | CH FILTER | • | • | • | • | • | • | | | |
| 425 | 5412270 | GASKET FAN HT | | | | • | • | • | | | |
| 511 | 5404600 | O.R. 17,86x2,62 | • | • | • | • | • | • | | | |
| 528 | 8435500 | NTC SENSOR D18-ITS2410201/0- | • | • | • | • | • | • | | | |
| 600 | 710045400 | CLIP FLAT d.18 | • | • | • | • | • | • | | | |
| 624 | 710046200 | HALL SENSOR ASSY | | | • | | | • | 1219 | | |
| 624 | 710976600 | HALL SENSOR ASSY | | | • | | | • | | 1220 | YES |
| 675 | 710046100 | CLIP BRASS ADAPTOR | • | • | • | • | • | • | | | |
| 692 | 5114360 | PRIMARY EXCHANGER CLIPS | • | • | • | • | • | • | | | |
| 693 | 5117440 | PRINTED CNTR. PANEL PROTECTION | • | • | • | • | • | • | | | |
| 763 | 710046700 | CLIP FLAT d.12 | • | • | • | • | • | • | | | |

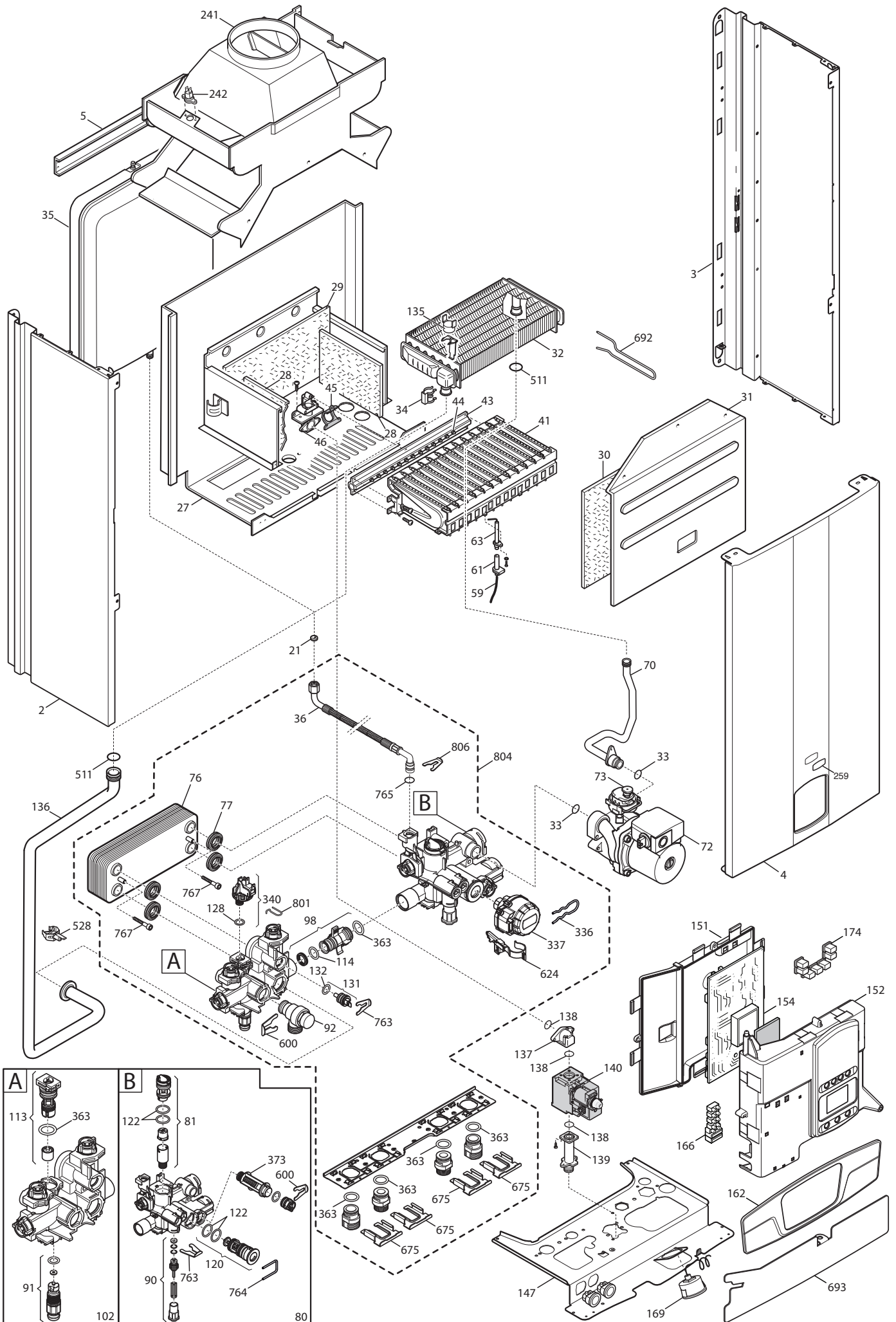
FOURTECH

| Pos | Code | Description code | | | | | | | To serial number | From serial number | Intercha ngeable: |
|-----|-----------|--------------------------------|----------------------|----------------------|----------------------|------------------------|------------------------|------------------------|------------------------|--------------------------|----------------------|
| | | | CSB461143680 1.14 | CSB461243680 1.24 | CSB462243680/1 24 | CSB465143680 1.14 F | CSB465243680 1.24 F | CSB466243680/1 24 F | | | |
| 764 | 710047500 | CLIP U d.3 | | | • | | | | | | |
| 765 | 710045700 | O-RING d.9,19 X 2,62 | • | • | • | • | • | • | | 1314 | YES |
| 765 | 710069700 | O-RING 9,19X2,62 EPDM | • | • | • | • | • | • | 1313 | | |
| 767 | 710046900 | PTP EXCH FIXING SCREW | | | • | | | • | | | |
| 801 | 710048700 | CLIP CH PRESSURE SWITCH | • | • | • | • | • | • | | | |
| 804 | 5698760 | HYDRAULIC GROUP COMBI BITRON | | | • | | | • | | | |
| 804 | 5699200 | HYDRAULIC GROUP ONLY HEATING | • | • | | • | • | | | | |
| 806 | 5117880 | CLIP d.10 BITRON | • | • | • | • | • | • | | | |
| 999 | 8414540 | CABLE ROOM TH | • | • | • | • | • | • | | | |
| 999 | 8414620 | POWER CABLE | • | • | • | • | • | • | | | |
| 999 | 8419040 | CABLE - EARTH | • | • | • | • | • | • | | | |
| 999 | 8513650 | LOW VOLTAGE WIRING ECO4 ATM | • | • | • | | | | | | |
| 999 | 8513660 | FAN WIRING ECO4 | | | | • | • | • | | | |
| 999 | 8513670 | LOW VOLTAGE WIRING ECO4 FF | | | | • | • | • | | | |
| 999 | 8513890 | HIGH VOLTAGE WIRING ECO4 SIT | | | • | | | • | | | |
| 999 | 8513900 | HIGH VOLTAGE WIRING ECO4 HON. | | | • | | | • | | | |
| 999 | 8513910 | LOW VOLTAGE WIRING ECO4 BITRON | | | • | | | • | | | |
| 999 | 8513930 | HIGH VOLT.WIRING ECO4 SIT MON. | • | • | | • | • | | | | |
| 999 | 8513940 | HIGH VOLT.WIRING ECO4 HON. | • | • | | • | • | | | | |
| 999 | 8513950 | LOW VOLT.WIRING ECO4 MONOTHER. | • | • | | • | • | | | | |

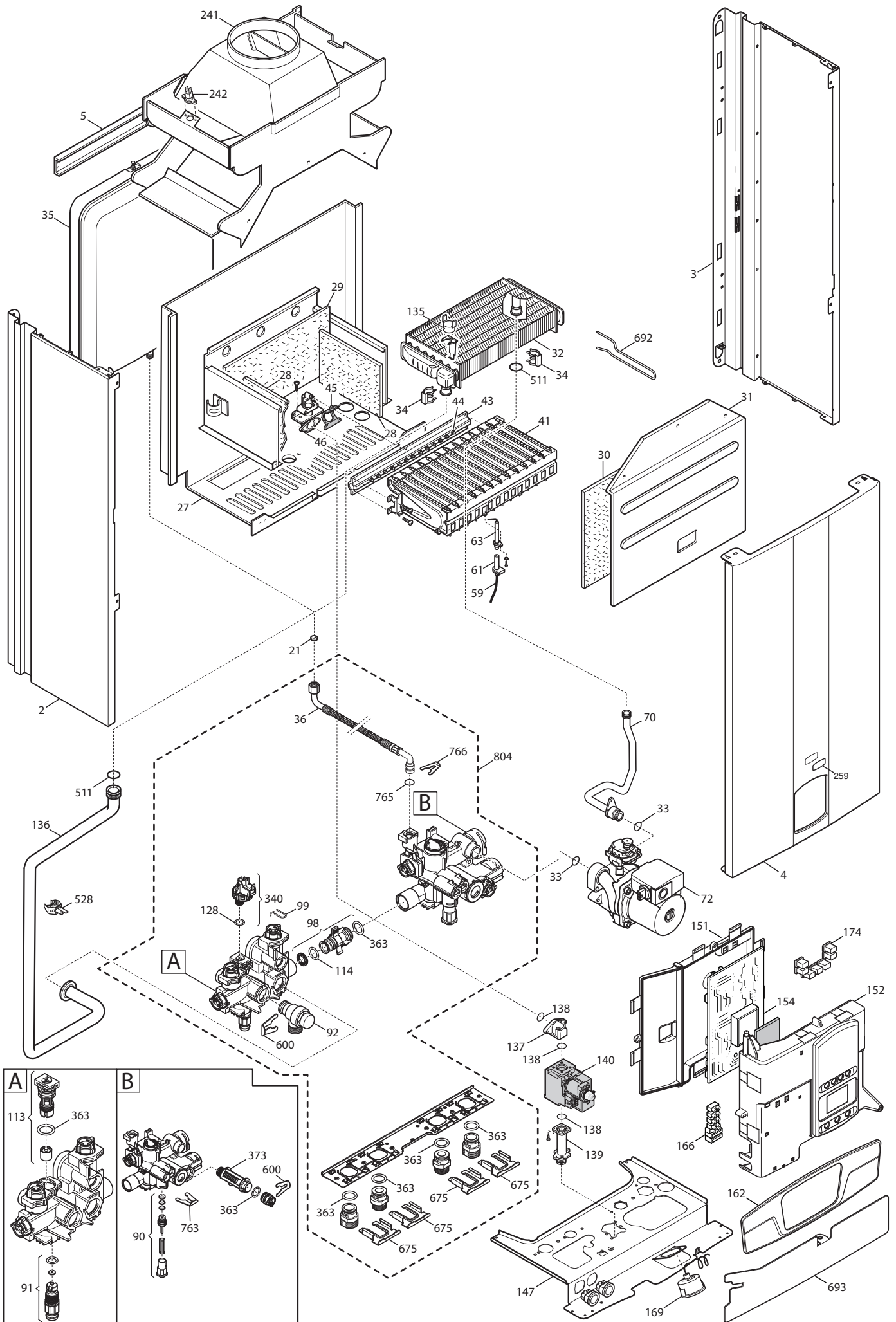
Tab 365



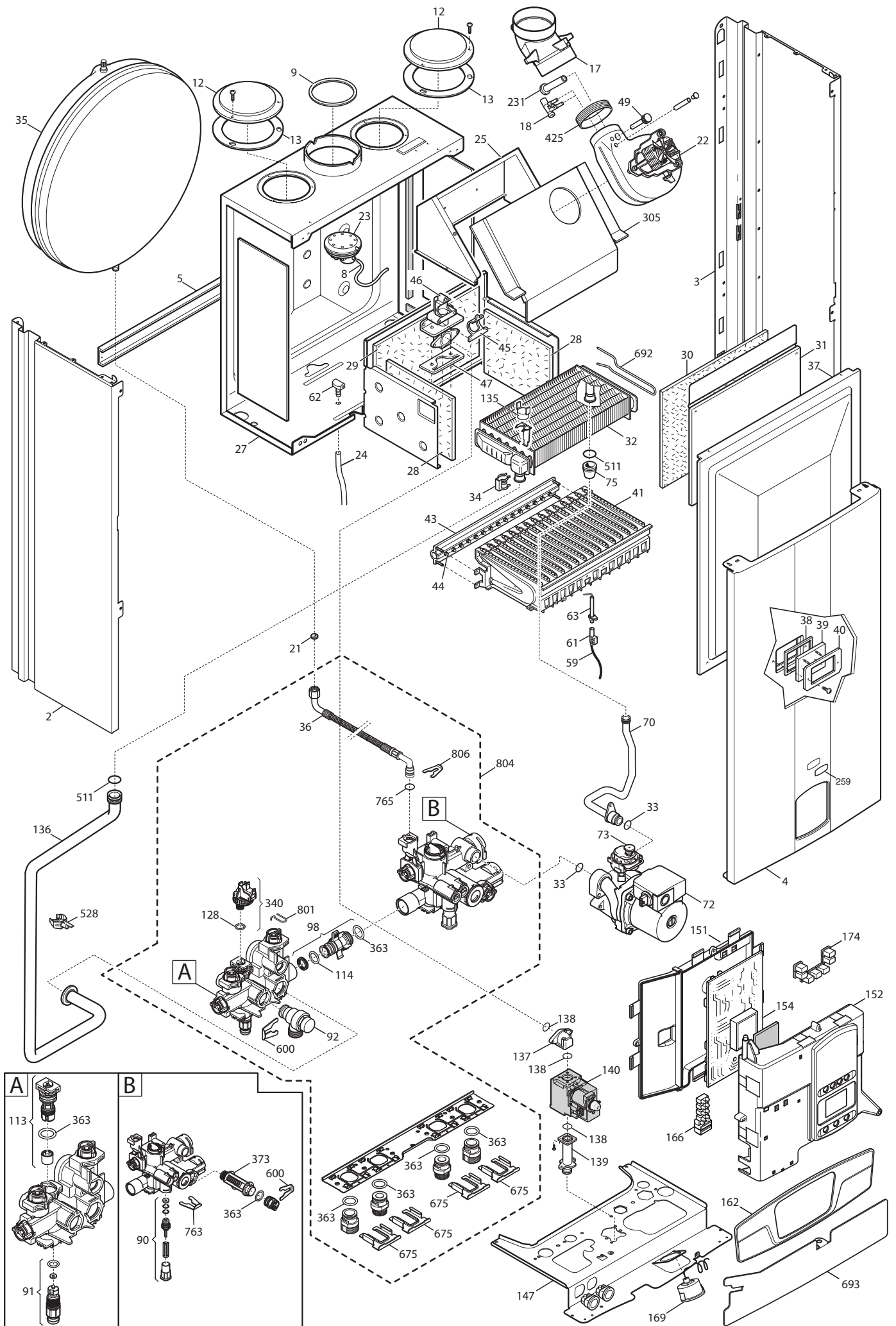
Tab 366



Tab 375



Tab 376



BAXI

BAXI S.p.A.
Via Trozzetti, 20
36061 BASSANO DEL GRAPPA (VI)
ITALY
Tel. +390424517111
Telefax +390424517379
E-mail. service@baxi.it