

**BAXI**



**MAINFOUR**

**SPARE PARTS CATALOGUE**

**- January 2015 -**



## HOW TO READ THE SPARE PARTS CATALOGUE

In the spare part catalogue, after the exploded diagrams, there are the components lists of the boilers; this is the meaning of the different columns:

**Pos.** Identification number of the component in the exploded diagram of the boiler.

**Description** Short description of the component.

**Code** BAXI S.p.A. code of the component.

**Tab. XX** XX is the exploded diagram number of the boiler taken into consideration.

### UNTIL 31th December 2011

**From serial number** Date (year and week) identifying the beginning of production of a component (taken from the serial number of the boiler).  
e.g. **B005: year 2000** (B identifies the decade 2000-2009; 0 identifies the year) – **5<sup>th</sup> week**.  
If the box is empty, the component is in use from the beginning of production of the boiler.

**To serial number** Date (year and week) identifying the end of production of a component (taken from the serial number of the boiler).  
e.g. **B012: year 2000** (B identifies the decade 2000-2009; 0 identifies the year) – **12<sup>th</sup> week**.  
If the box is empty, the component is still in use.

**Interchangeable** It identifies the interchangeability between the new component and the old one.  
YES: components are interchangeable.  
NO: components are not interchangeable.

### FROM 1<sup>st</sup> January 2102

**From serial number** Date (year and week) identifying the beginning of production of a component (taken from the serial number of the boiler).  
e.g. **1201: year 2012** (1 identifies the decade 2010-2019; 2 identifies the year) – **1<sup>th</sup> week**.  
If the box is empty, the component is in use from the beginning of production of the boiler.

**To serial number** Date (year and week) identifying the end of production of a component (taken from the serial number of the boiler).  
e.g. **1225: year 2012** (1 identifies the decade 2010-2019; 2 identifies the year) – **25<sup>th</sup> week**.  
If the box is empty, the component is still in use.

**Interchangeable** It identifies the interchangeability between the new component and the old one.  
YES: components are interchangeable.  
NO: components are not interchangeable.

## TABELLA COLLEGAMENTO CODICE CALDAIA - ESPLOSO TABLEAU CONNECTION CODEX CHAUDIERE - VUE ECLATEE BOILERS CONNECTION BOARD - EXPLODED VIEW

BOILER CODE	BOILER DESCRIPTION	EXPLODED REF.
CODICE CALDAIA	DESCRIZIONE CALDAIA	RIF. ESPLOSO
CODIGO CALDERA	DESCRIPCION CALDERA	REF. EXPLOSIONADO
CODE CHAUDIÈRE	DESCRIPTION CHAUDIÈRE	RÉF. EXPLOSÉE
BSB462243651/2	MAINFOUR 24	Tab 396
BSB462243650	MAINFOUR 24	Tab 396
BSE466243653/4	MAINFOUR 240 F	Tab 381
BSE466243652	MAINFOUR 240 F	Tab 381
BSE466243650/1	MAINFOUR 240 F	Tab 381

# MAINFOUR

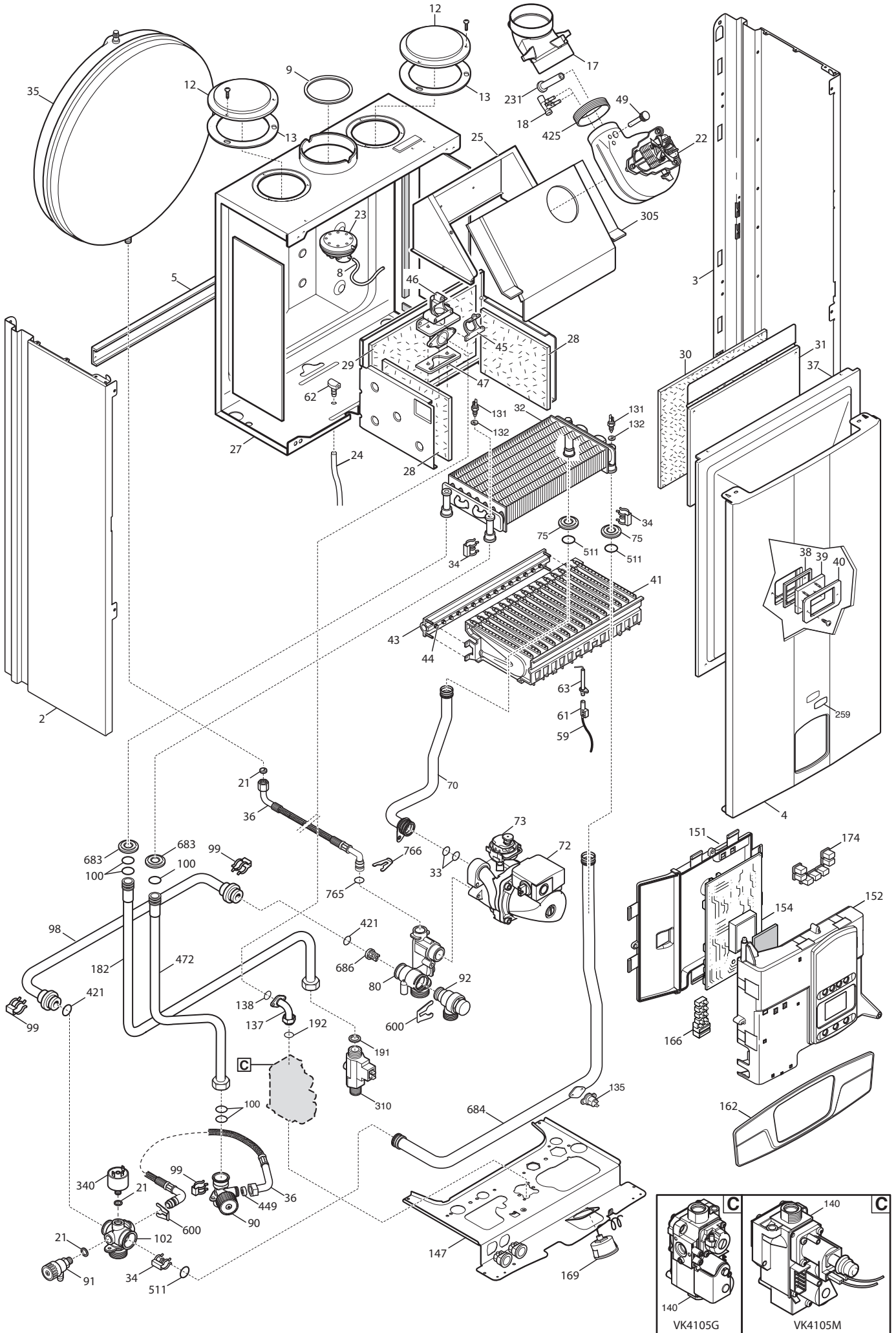
Pos	Code	Description code	BSB46243650/24	BSB46243651/24	BSB46243650/1240 F	BSB46243651/1240 F	BSB46243653/4240 F								To serial number	From serial number	Interchangeable:
2	5698660	LEFT PANEL ASSEMBLY ECO4 ATM.	•	•													
2	5698680	LEFT PANEL ASSEMBLY ECO4 FF			•	•	•										
3	5698650	RIGHT PANEL ASSEMBLY ECO4 ATM.	•	•													
3	5698670	RIGHT PANEL ASSEMBLY ECO4 FF			•	•	•										
4	628820	FRONTAL PANEL ASS. ECO4 ATM	•	•	•	•	•										
5	5117420	TRAVERSE SIDES CONNECTION FF			•	•	•										
5	5117460	TRAVERSE SIDES CONNECTION-ATM-	•	•													
8	5408080	PRESSURE SWITCH PIPE L=270			•	•	•										
9	5117740	FLUE REDUCTION d.78mm			•	•	•										
12	5108690	PLATE BLANKING			•	•	•										
13	5407400	SUCTION CAP GASKET			•	•	•										
17	5214290	BEND FLUE EMISSIONS ECO4			•	•	•										
18	5413850	PRESS.SENS.VENTURI SINGLE TAP			•	•	•										
21	5402050	WASHER-SEALING	•	•	•	•	•										
22	5682150	FAN			•	•	•										
23	628610	PRESS.SWITCH ASS. 0,68mbar HONEYW.					•										
23	628610	PRESS.SWITCH ASS. 0,68mbar HONEYW.			•											C121	YES
23	628720	FLUE PRESS.SWITCH 0,68 mbar			•										C120		
23	710789900	PRESSURE SWITCH ASSEMBLY HUBA			•	•	•								1448		
23	721890300	FLUE PRESS.SWITCH 70-60Pa HUBA			•	•	•									1449	YES
24	5407930	PIPE - VALVE COMPENSATION			•										B923		
24	5414320	PIPE-VALVE COMPENS.4,5x8 L=170					•	•									
24	5414320	PIPE-VALVE COMPENS.4,5x8 L=170			•											B924	YES
25	5113800	CONVEYOR ASSEMBLY			•	•	•										
27	5668290	COMBUSTION CHAMBER ASSEMBLY	•	•													
27	5703330	COMB. CHAMBER ASS.MAIN4 270			•	•	•										
28	5213210	INSULATING PANEL			•	•	•										
28	5213220	INSULATING PANEL	•	•													
29	5213280	INSULATING PANEL	•	•	•	•	•									B506	YES
30	5213370	INSULATING PANEL			•	•	•										
30	5213380	FRONTAL INSULATING PANEL	•	•													
31	612970	COMB. CHAMBER FRONTAL PANEL			•	•	•										
31	5114290	COMB. CHAMBER FRONTAL PANEL	•	•													
32	616170	BI-THERMAL HEAT EXCHANGER+ OR	•	•	•	•	•									B403	YES
32	5663720	BI-THERMAL HEAT EXCHANGER	•	•	•	•	•								B402		
33	5403130	O-RING 22 x 3	•	•	•	•	•								1311		
33	710963000	OR 21,5X3 EP70 TFL	•	•	•	•	•									1312	YES
34	5113650	PRIMARY EXCHANGER FIXING CLIP	•	•	•	•	•										
35	5693900	RECT.EXPANSION VESSEL 6I-CIMM-	•	•													
35	5693920	CIRC.EXPANS.VESSEL 6I CIMM			•	•	•										YES
35	5695230	CIRC.EXPANS.VESSEL 6I ZILMET			•	•	•								C012		

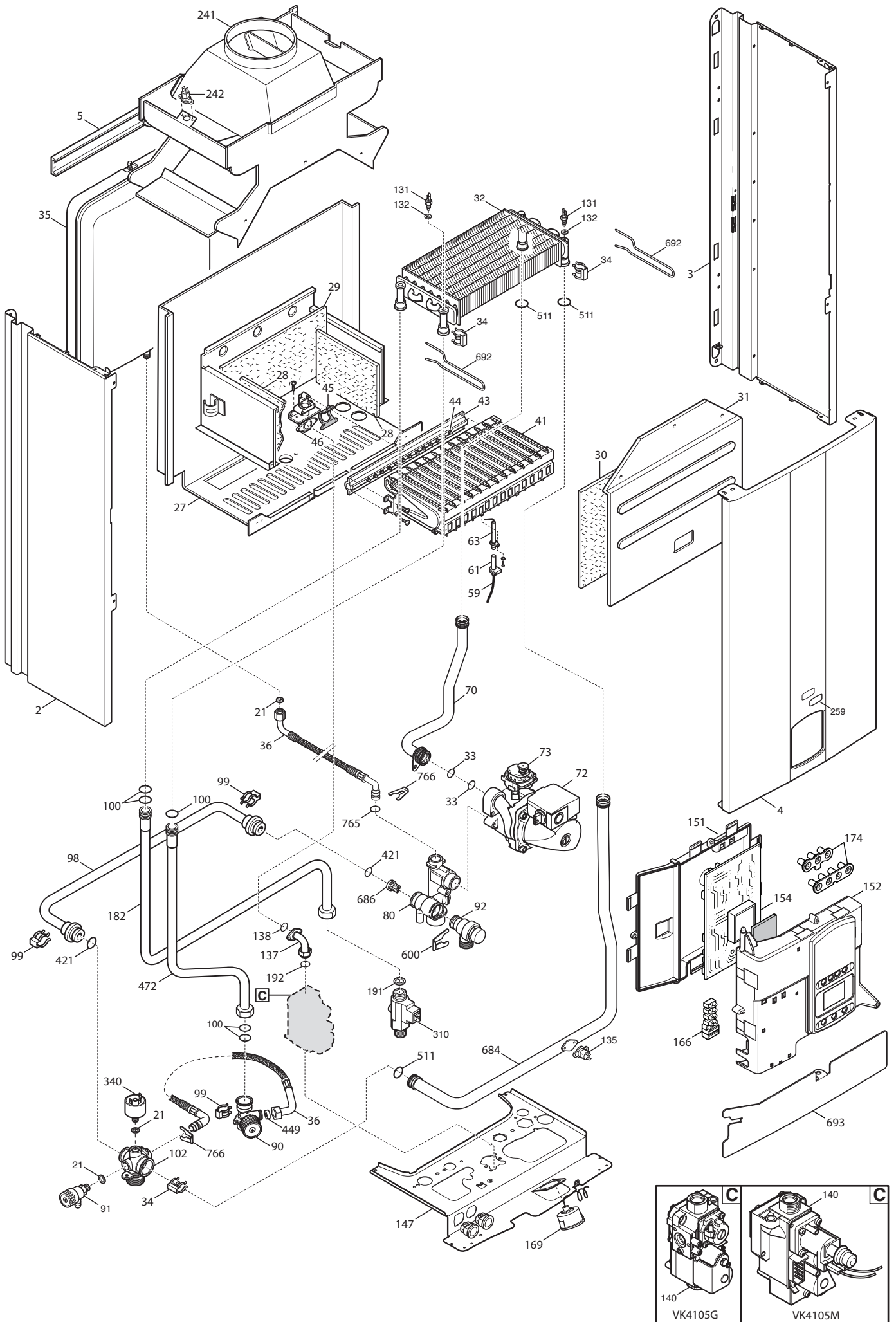




# MAINFOUR

Pos	Code	Description code						To serial number	From serial number	Interchangeable:
			BSB462243650 24	BSB462243651/2 24	BSE46243650/1 240 F	BSE46243652 240 F	BSE46243653/4 240 F			
683	5408810	GASKET GAS RAMP			•	•	•			
684	5700350	PIPE EXCHANGER/HEATING OUTLET	•	•						
684	5703350	PIPE EXCH./INLET MAIN4 FF 270			•	•	•	1438		
684	711215800	PIPE PUMP/EXCH.MAIN4 FF 270			•	•	•		1439	YES
686	5663020	BY-PASS PLUG ASSEMBLY	•	•	•	•	•			
692	5114360	PRIMARY EXCHANGER CLIPS	•	•						
693	5117440	PRINTED CNTR. PANEL PROTECTION	•	•						
765	710045700	O-RING d.9,19 X 2,62	•	•	•	•	•		1314	YES
765	710069700	O-RING 9,19X2,62 EPDM	•	•	•	•	•	1313		
766	5118110	FLAT SPRING diameter 10	•	•	•	•	•			
999	8414540	CABLE ROOM TH	•	•	•	•	•			
999	8414620	POWER CABLE	•	•	•	•	•			
999	8419040	CABLE - EARTH	•	•	•	•	•			
999	8513660	FAN WIRING ECO4			•	•	•			
999	8514040	HIGH VOLT.WIRING MAIN4 HONEYW.		•			•			
999	8514150	HIGH VOLTAGE WIRING MAINFOUR	•		•	•				
999	8514160	GAS VALVE WIRING MAINFOUR	•		•	•				
999	8514170	LOW VOLT.WIRING 12P.MAINFOUR	•							
999	8514180	LOW VOLT.WIRING 6P.MAINFOUR	•							
999	8514280	LOW VOLT.WIRING.MAIN 44 FF 270			•	•				
999	8514300	L.V.WIRING 12P.MAIN4 FF 270			•	•				
999	710696800	LOW POWER CABLE 12 PIN					•			
999	710696900	LOW POWER CABLE 6 PIN					•			
999	710714500	LOW POWER CABLE 12PIN MAINFOUR		•						
999	710714600	LOW POWER CABLE 6PIN MAINFOUR		•						







**BAXI**

**BAXI S.p.A.**  
**Via Trozzetti, 20**  
**36061 BASSANO DEL GRAPPA (VI)**  
**ITALY**  
**Tel. +390424517111**  
**Telefax +390424517379**  
**E-mail. [service@baxi.it](mailto:service@baxi.it)**